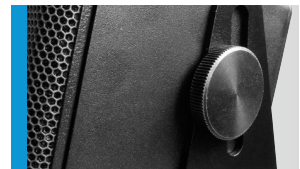




Miniatur-Lautsprechersystem für alle Anwendungen, bei denen eine besonders unauffällige Erscheinung, gute Klangeigenschaften und Leistungsdaten gefordert werden. Der sehr kräftige 4" Breitbandlautsprecher strahlt präzise ab und kann unverzerrte Pegel von über 113 dB erreichen. Umfangreiche Fliegepunkte, vielfältige Anschlussmöglichkeiten und der serienmäßige Bügel machen das i4 System zu einem universellen Beschallungswerkzeug für viele Nahfeldanwendungen.

PRODUCT SPECIFICATIONS

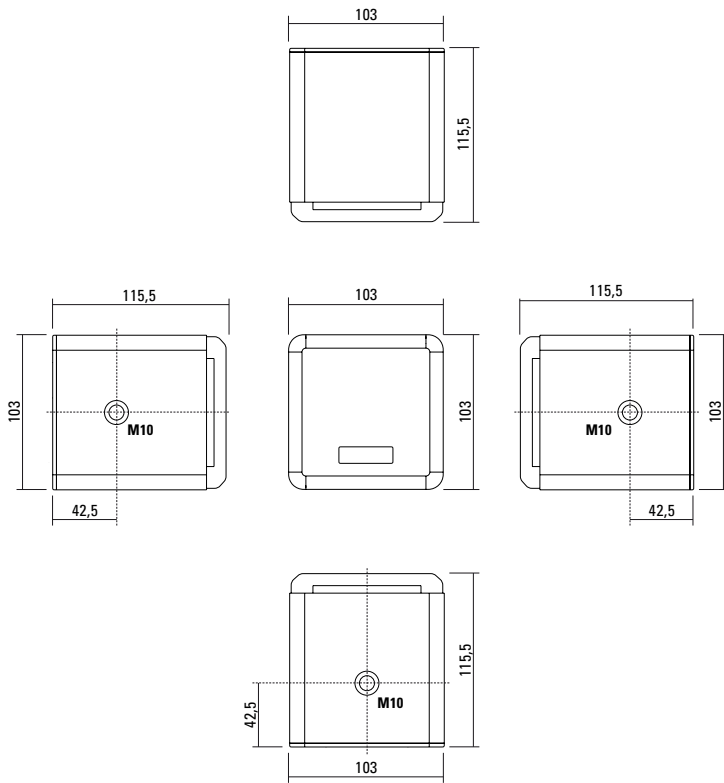
Speaker Components	4" wideband
Description	Multi Media Sound System
Power AES / Peak	100 W / 300 W
Impedance nominal	16 Ω
SPL 1 W / Peak @ 1 m	91 dB / 113 dB
Usable Range	150 Hz - 16 kHz (-6 dB)
Coverage horizontal / vertical	80° - conical
Max. Splay Angle	---
Connectors	2 x Neutrik Speakon NL4MP in/out Coding: 1 +/- HiMid, 2 +/- loop thru 1 x Phoenix
Handles	---
Rigging / Fittings	3 x M10 / 1 x M6
Weight	1,6 kg
Size height x width x depth	10,3 x 10,3 x 11,6 cm
Order No.	00150/black 00150/white (RAL 9010)



Ultra kompakt.



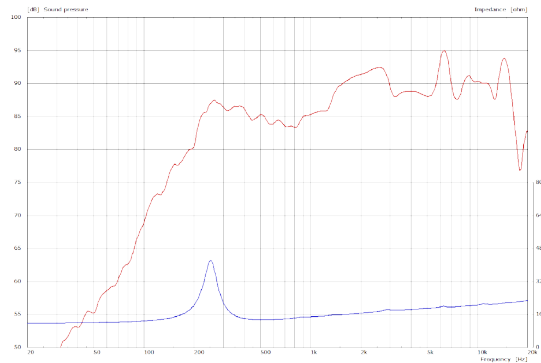
DIMENSIONS



Controller Setups:

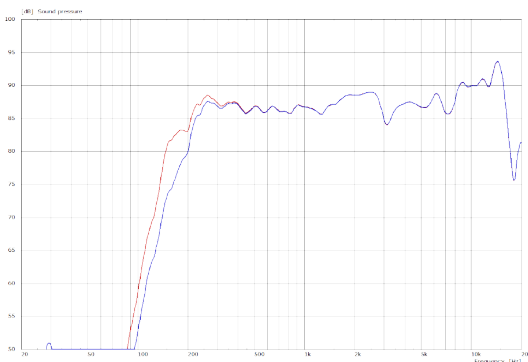
<http://www.seeburg.net/de/downloads>

Sensitivity 1 W @ 1 m + Impedance

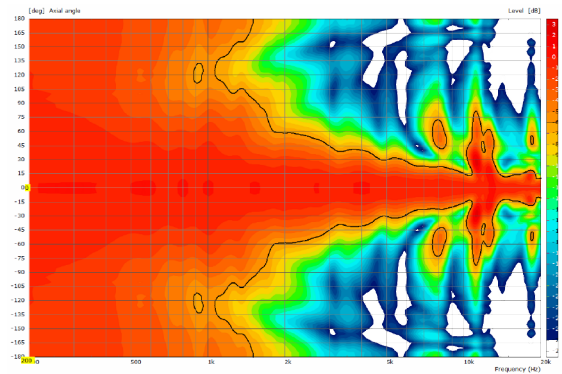


MEASUREMENTS

Frequency Response with Presets



2D Directivity Plot - radial



ACCESSORIES i4

Flying Bracket



for i4,
incl. socket screws,
2 x M10 x 20 mm

Order No. **01203**
Order No. **01203/w** (white)

Knurled Screw



M10 x 20 mm

Order No. **73750**
Order No. **73750/w** (white)

Phoenix Connector



2 pol Order No. **08257**
4 pol Order No. **08256**

Truss Clamp



incl. M10 Adapter,
max. load 15 kg

Order No. **01221**

Flange



with ball and socket joint,
with additional locking screw,
M10 x 15, max. load 15 kg

Order No. **08125**

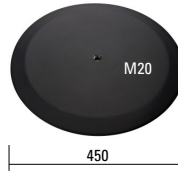
Steel Safety



4 mm x 600 mm, black,
max. load 10 kg (BGI 810-3),
quick connector undetachably

Order No. **01376/4**

Base Plate, Round



M20, K&M,
ø 450 mm, height: 21 mm
black zinc die-cast, felt strips on
the bottom, weight: 6,7 kg

Order No. **01278/round**

Speaker Pole, Light



adjustable, K&M,
incl. M20 Adapter

Order No. **03004/set**

Flight Case



for 4 pcs. i4, with mounted flying
brackets 01203, standard, 7,0 mm
birch multiplex, PVC coated, partition
walls, hinged lid, 1 x recessed sprung
handle, 1 x butterfly catches, rubber
feet, interior lined with felt.

Order No. **16450**

Flight Case



for 8 pcs. i4, with mounted flying
brackets 01203, standard, 7,0 mm
birch multiplex, PVC coated, partition
walls, hinged lid, 2 x recessed sprung
handles, 2 x butterfly catches,
rubber feet, interior lined with felt.

Order No. **16452**

